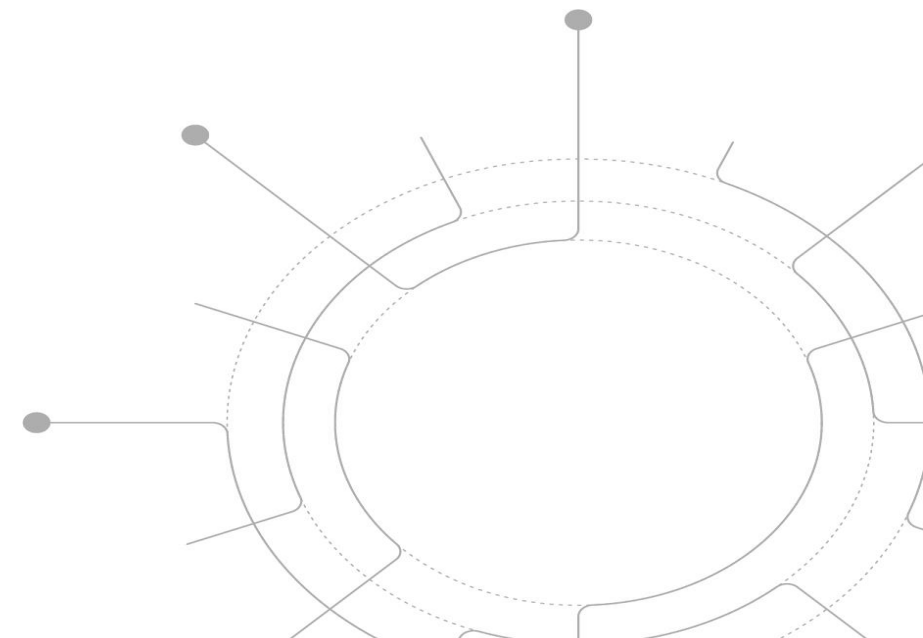




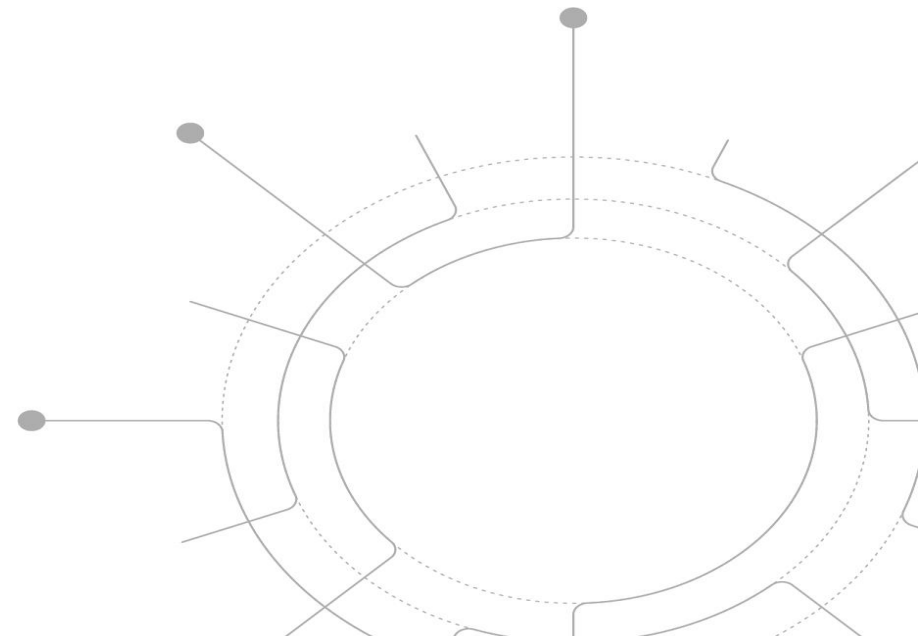
# BAC UPDATE 2021

JULY 12, 2021





- Overview and Update on Segment 8
- COVID-19 Impacts
- ESSER Impact
  - Facilities Planning
  - Possible Federal Infrastructure Bill
  - Long-term Facilities Maintenance Planning



The top of the slide features a decorative banner with a group of diverse children looking towards the right. Below this, a large white curved shape contains the main text. On the right side of the slide, there is a faint, light gray circular diagram consisting of concentric circles and radial lines, resembling a stylized sun or a network diagram.

# Overview and Update on Segment 8

> A Quick Look Back, Then A Look Forward

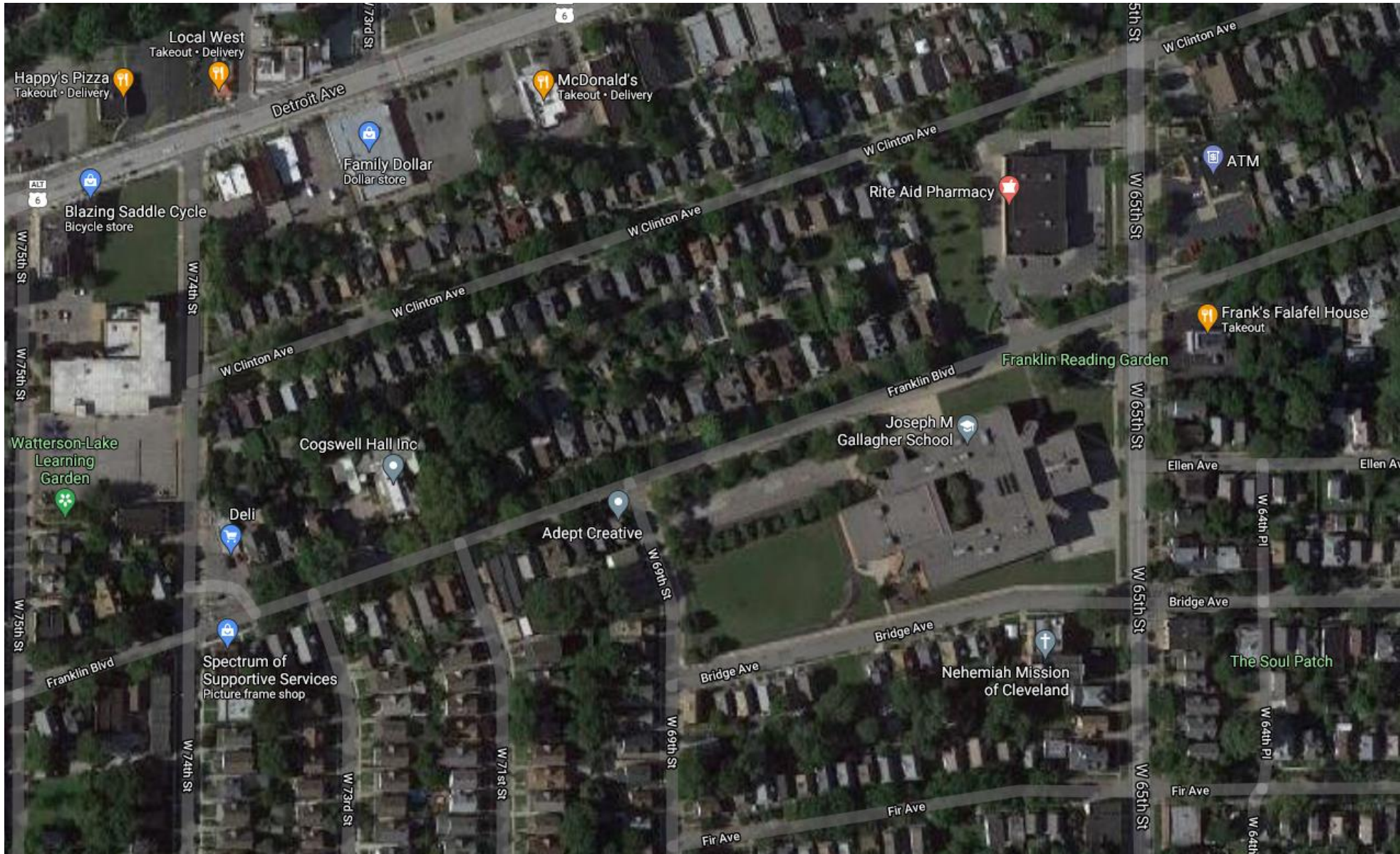
Segments 8 will consist of:

4 Building Projects (Joseph M. Gallagher, Clark, Marion Seltzer, Lincoln-West)

7 Demolitions (Watterson-Lake, Robert Fulton, Fullerton, JFK, Lincoln-West, Clark, Marion Seltzer)

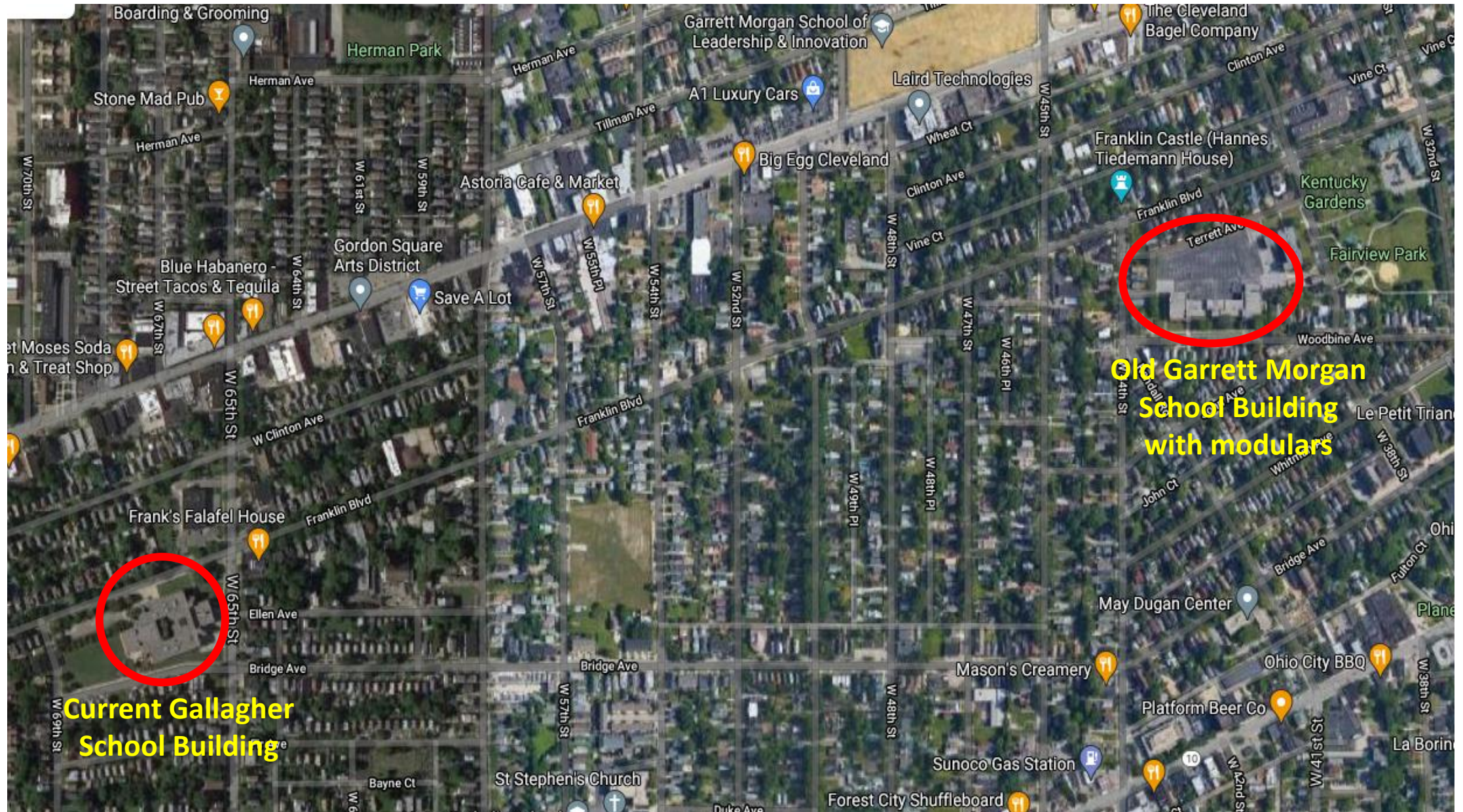


# J. M. Gallagher Building Renovation



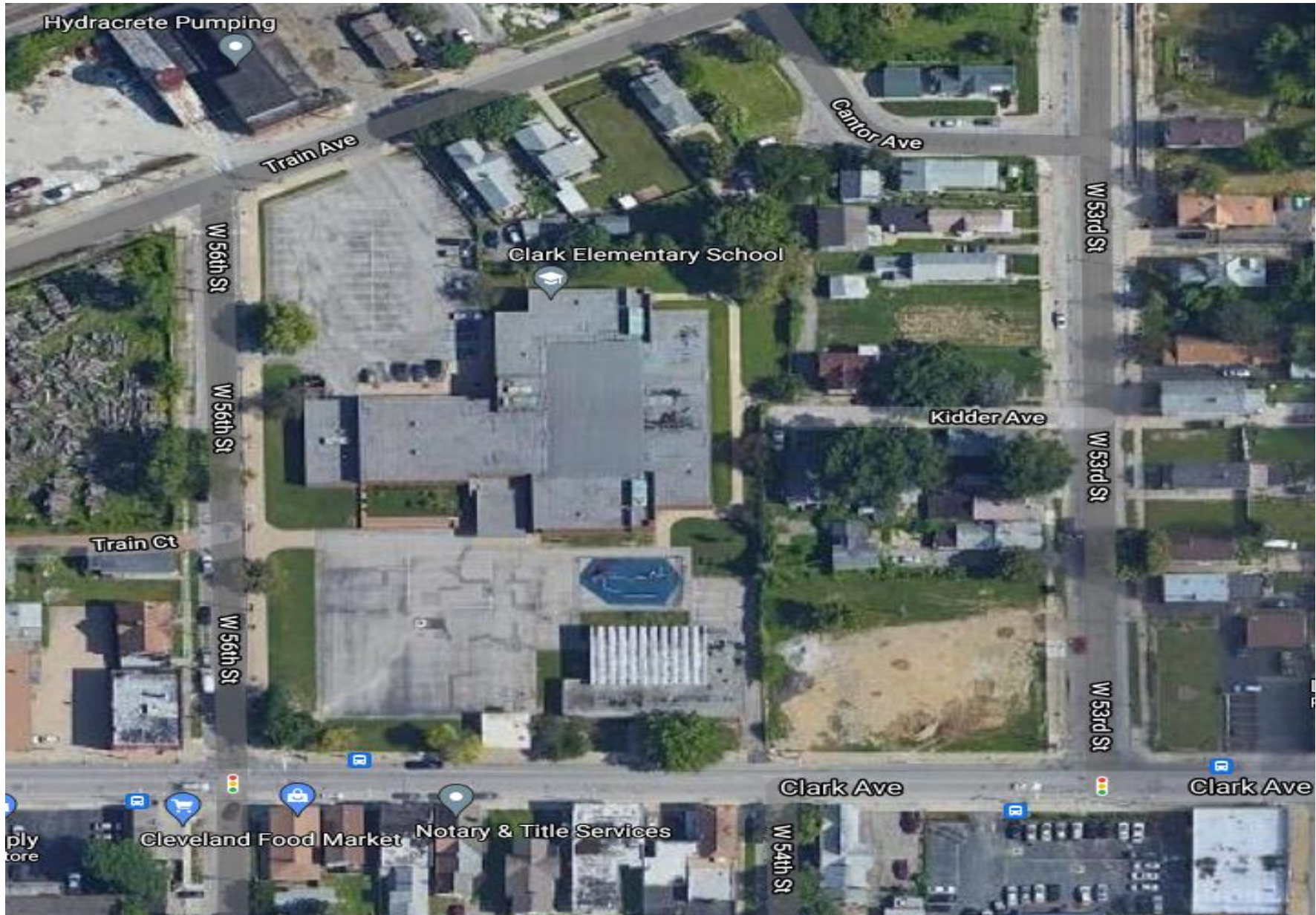


# J. M. Gallagher: Swing Site During Renovation



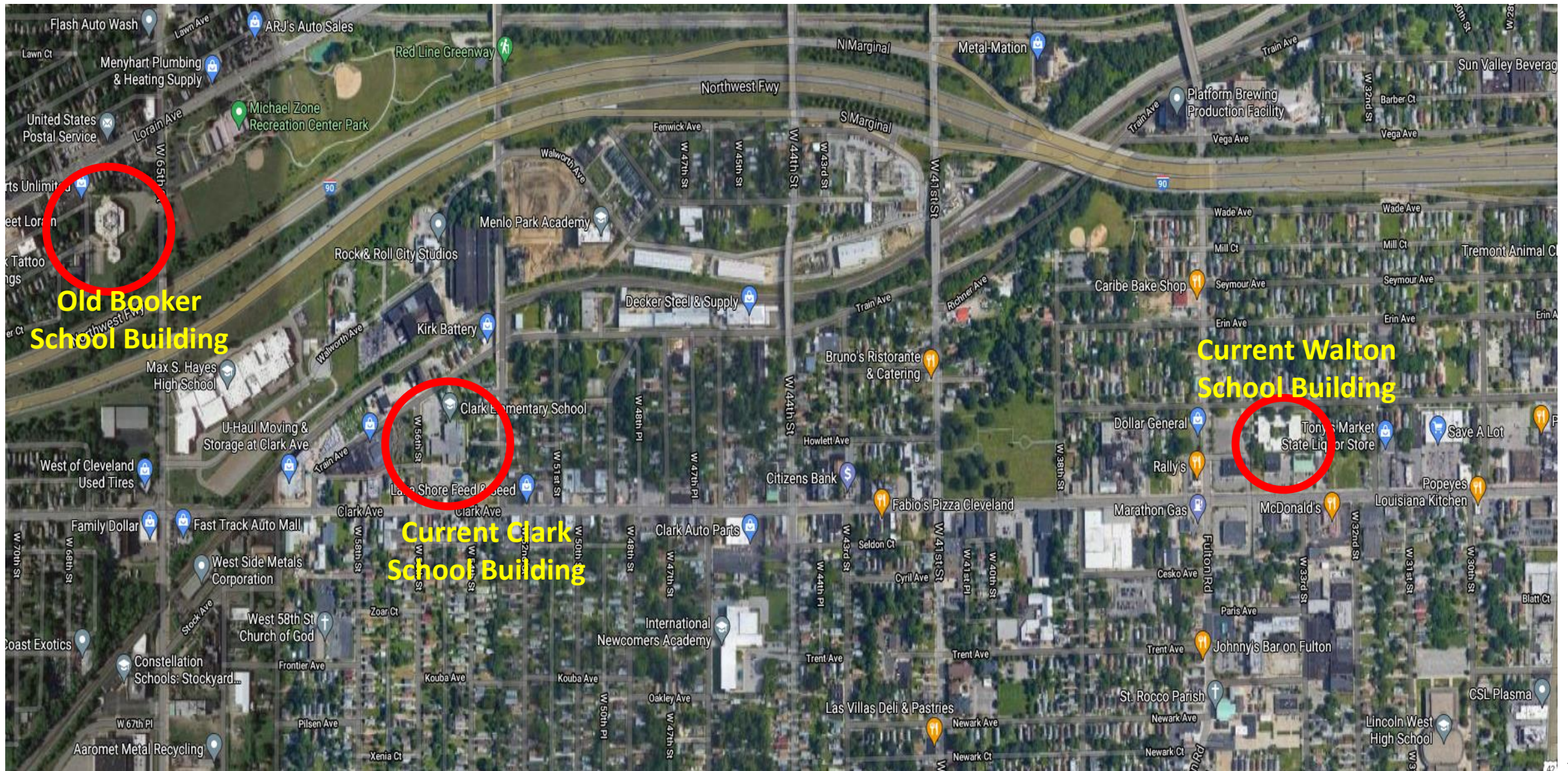


# Clark: New Building Constructed on Same Site



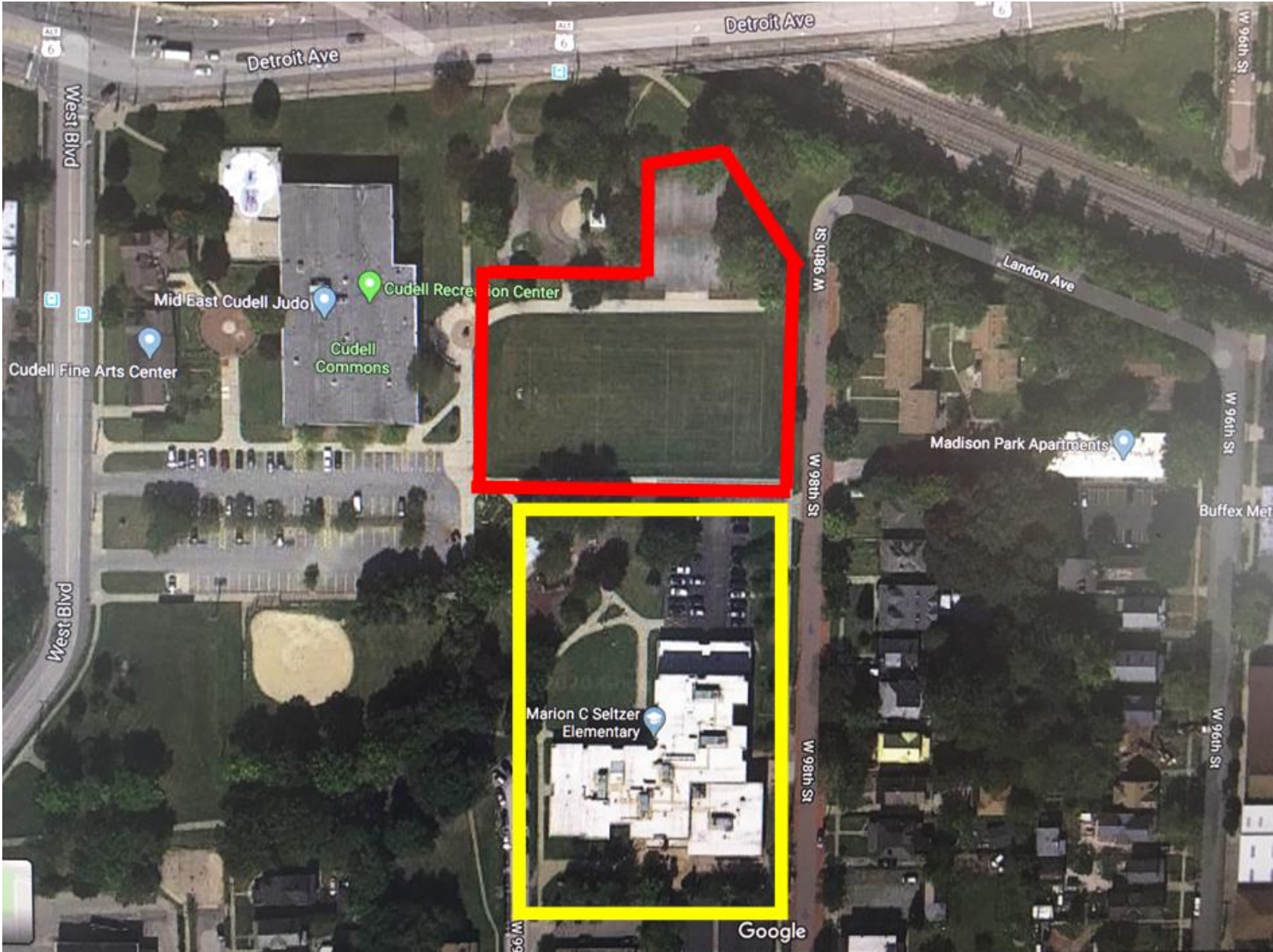


# Clark: Swing Sites During Construction



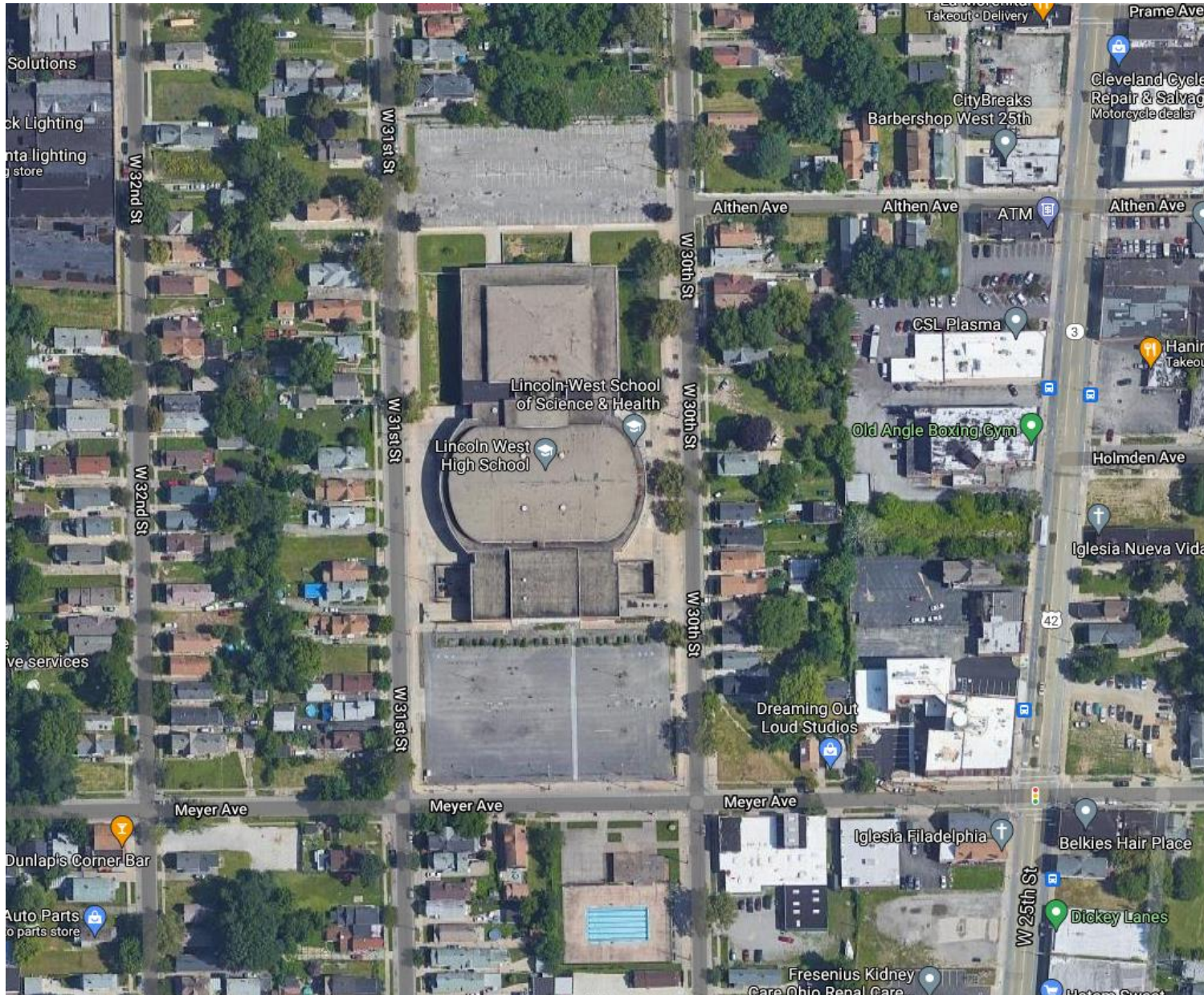


# Marion Seltzer: New Building Constructed on Adjoining Site





# Lincoln-West: New Building Constructed On Same Site





# Lincoln-West: Swing Site During Construction





# Projected Segment 8 Timeline

<h2>2021</h2>	<p> <b>May</b> CMSD Board approves Segment 8 Budget  <b>July</b> OFCC approves Segment 8 Agreement  <b>August</b> Ohio Controlling Board approves funding  <b>Fall</b> OFCC posts RFQ for Architect(s) and Construction-Manager-at-Risk (CMR)  <b>October-December</b> OFCC/CMSD retain Architect(s) and Construction-Manager-at-Risk (CMR)         </p>
<h2>2022</h2>	<p> <b>January</b> Prepare Engagement Plan  <b>Winter/Spring</b> Launch Engagement for Site Planning, Circulation, Exterior Design of New Building and Recreation Center integration w/City of Cleveland (Cudell, Clark)  <b>Spring</b> Begin Schematic Design (SD); Finalize Abatement/Demolition documents; Finalize Swing Sites  <b>Summer/Fall</b> Begin Abatement/Demolition of buildings; Begin Design Development (DD), City Approvals  <b>Fall</b> Begin Renovation of J.M. Gallagher         </p>
<h2>2023</h2>	<p> <b>Fall</b> Begin Construction Drawings (CD)  <b>Winter</b> Complete Abatement/Demolition            Finalize Bids/Award Contracts  <b>Spring/Summer</b> Groundbreakings/Construction K-8 Schools (7/1/23 - 8/31/24)  <b>Summer</b> Groundbreakings/Construction Lincoln-West High School (7/1/23 - 6/30/25)         </p>
<h2>2024</h2>	<p> <b>August</b> Ribbon-Cuttings for J.M. Gallagher, Clark and Marion C. Seltzer  <b>September-December</b> Finalize Abatement/Demolition documents for Marion C. Seltzer         </p>
<h2>2025-26</h2>	<p> <b>Spring</b> Complete Construction/Ribbon-cutting for Lincoln-West HS  <b>Spring/Summer</b> Abate/Demolish Marion C. Seltzer  <b>Fall</b> Construct multi-purpose field  <b>Fall/Winter</b> Close-out Segment 8         </p>



# COVID 19 IMPACTS

**Deferred Work**

**HVAC Supply Chain**

**Supply Chain**

**Competition with other Federal Spending**

**Potential to enhance HVAC systems**



# ESSER Planning: Goals and Approach

## ESSER Possibilities

The opportunity and allowable use may be: “Inspection, testing, maintenance, repair, replacement and upgrade projects to improve the indoor air quality in school facilities, including mechanical and nonmechanical heating, ventilation, and air condition systems, filtering, purification and other air cleaning, fans, control systems, and window and door repair and replacement.”

## CMSD Capital Planning – 2021

Overview (20-year view of District Building Footprint and Operations/Administrative Buildings)

What could we do?

What would we do?

What should we do?

## **Goal: A sustainable path to maintaining/upgrading the District’s capital assets**

*How do we optimize the available local (levy), state (OFCC) and federal (ESSER 3 funds & possible infrastructure funding) to fund the capital needs of the District for the next 20 years.*

**Follow-up Goal:** Securing a permanent funding stream to pay for building maintenance.



# ESSER Planning: Building Assessments

5 Architectural firms retained to assess 41 buildings and provide costs to update buildings to match current Ohio School Design Manual

Cost information will be gathered on the following 23 Building Systems:

**A. Heating System**

**B. Roofing**

**C. Ventilation/Air Conditioning**

D. Electrical Systems

E. Plumbing and Fixtures

**F. Windows**

G. Structure

H. Structure: Walls and Chimneys

I. Structure: Floors and Roofs

J. General Finishes

K. Interior Lighting

L. Security Systems

M. Emergency/Egress Lighting

N. Fire Alarm

O. Handicapped Access

P. Site Condition

Q. Sewage System

R. Water Supply

**S. Exterior Doors**

T. Hazardous Materials

U. Life Safety

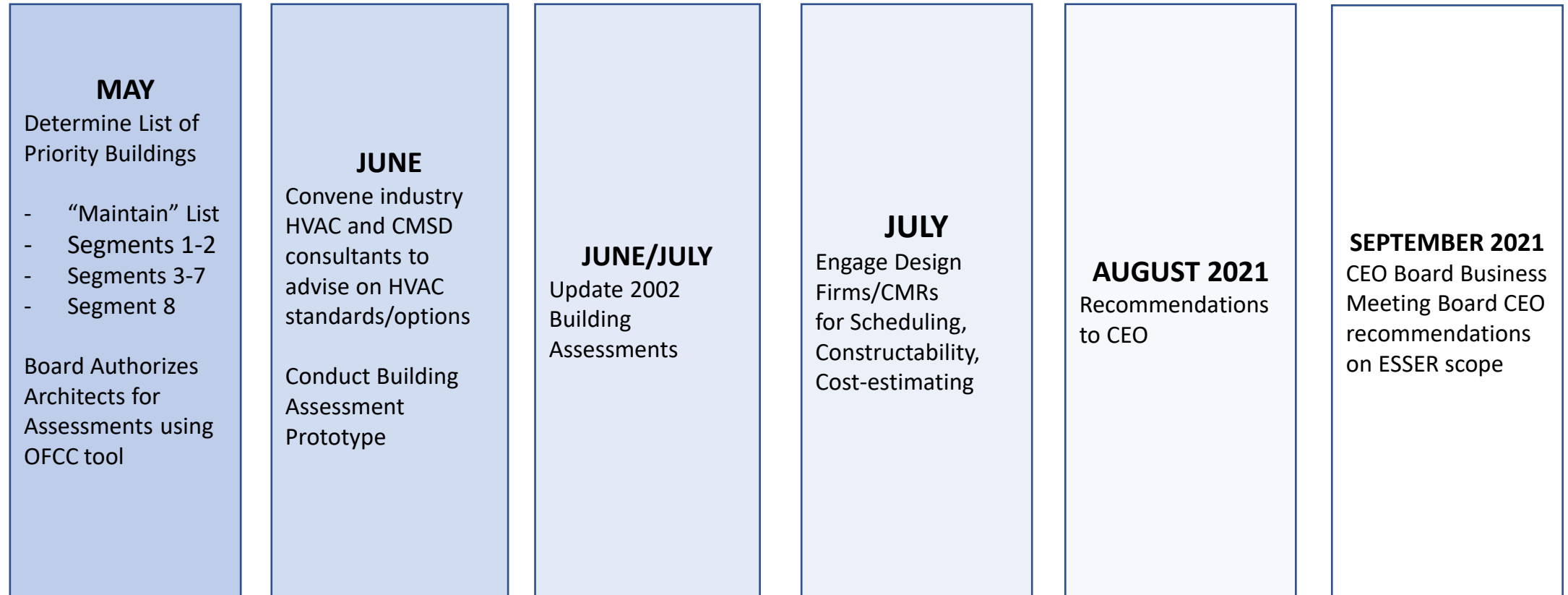
V. Loose Furnishings

W. Technology

**See items in Bold for ESSER-eligible building systems**



# ESSER Planning: Timeline 2021



ONGOING: Supplementary Data Collection



# Elements of Deferred Maintenance Plan

## *Existing Resources*

1. Bond Proceeds
2. Permanent Improvement Levies (034 and 003)
3. General Fund

## *Existing/Future Federal*

### Federal ESSER Funding

- School facility repairs and improvements to enable operation of schools to reduce risk of virus transmission and exposure to environmental health hazards and to support student health needs.
- Inspection, testing, maintenance, repair, replacement, and upgrade projects to improve the indoor air quality in school facilities, including mechanical and nonmechanical heating, ventilation, and air conditioning systems, filtering, purification and other air cleaning, fans, control systems, and window and door repair/replacement.

### Federal Infrastructure Bill Funding (to be determined)

## *Future Funding*

- Annual 034 Funding
- Future Levies

**QUESTIONS AND ANSWERS**

**THANK YOU!**